

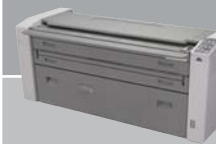
**TA Triumph-Adler**

**Large scale copying  
– without the joins!**

**CX 8020**

**CX 8020**

Analogue copier system



	<b>Technical data</b>
	<b>General</b>
Type	Console unit
Function	Copying
Printing technology	Indirect electrostatic system
Fusing method	Heat and pressure
Copy format	min 210 x 297 mm (A4), max 914 x 3,000 mm
Original format	min 210 x 297 mm (A4), max 914 x 3,000 mm
Original thickness	min 0.05 mm, max 0.2 mm
Copy speed	3.6 m/min
1st copy/warm-up time	33 seconds (A0)*8 minutes
Exposure control	2 x 7 steps
Paper feed	1 roll, single sheet feed
Paper weights	Standard paper 64–90 g/m <sup>2</sup> , tracing paper 90 g/m <sup>2</sup> , transparencies 120 g/m <sup>2</sup>
Paper output	In front
Continuous copying	1-19
Zoom	1:1
	<b>Dimensions/weight</b>
Dimensions	580 x 1,293 x 460 mm (W x D x H)
Weight	approx. 125 kg
	<b>Environment</b>
Mains voltage	220/240 V, 50/60 Hz
Power consumption	max 1,560 W
Noise level	approx. 55 dB(A) in operation, approx. 50 dB(A) in stand-by mode
	<b>Options</b>
Other options	Cabinet

## For oversized copy jobs with style to match!

The perfect blend of efficiency and functionality means the CX 8020 never fails to impress when it comes to large-format copy jobs. Plus, by delivering 3.6 m per minute of top-quality copying, it really is a machine you can rely on. The possibilities are truly endless with this professional copier. You choose what you want to copy onto: standard paper, tracing paper or even transparencies. The choice of format is yours too! You decide whether the length of the copy should exactly match that of the original or whether all documents should be copied in a specific size. Once the original has been read, the CX 8020 can produce up to 19 multiple copies. And that's not all! By performing a test-run, you can be doubly sure that everything meets your requirements, which not only keeps the original in excellent condition but also saves you precious time. To achieve optimal precision, this large-format champion boasts 14 different threshold values, which selects the setting best suited to your original. If your document is starting to look a little dog-eared and showing signs of age, don't worry! The CX 8020 can remove the background at the touch of a button.

Thanks to its well thought-out construction, the CX 8020 stands out when it comes to ease of use. From inserting the original to paper feeding, and from copy output to refilling the toner, all the basics are located on the system's front panel, meaning they are always within easy reach of the user. For something of such power this office giant takes up surprisingly little space!



The CX 8020 is manufactured in accordance with the requirements of the ENERGY STAR Program.  
\*depending on operating status. Specifications subject to change without notice. (02/2006)

At TA Triumph-Adler we have set ourselves the aim of making the everyday processing of documents as efficient as possible for you. The technical perfection of our products combined with preliminary consultation and finally on-site aftersales support guarantee you the problemfree, productive operation of our equipment. Thanks to this range of service we are able to offer you the best possible solutions.

TA Triumph-Adler

TA Triumph-Adler and the TA Triumph-Adler Logo are registered trademarks of TA Triumph-Adler AG.  
All other brand names are registered trademarks of their respective owners.